

Dates for Council Meetings 2022 23 _____ 2

ROLE OF PARISH COUNCIL REPRESENTATIVES _____ 3

Winchester City Councillor Report May 2022 _____ 4

Lead Parish and associate Agreement 2022 _____ 5

Correspondance from Resident on the Motocross _____ 10

Play Area Inspection _____ 11

DATES FOR FULL COUNCIL MEETINGS 2022/23

JUNE	13/06/2022	MONDAY	7PM
JULY	11/07/2022	MONDAY	7PM
AUGUST	08/08/2022	MONDAY	7PM
SEPTEMBER	12/09/2022	MONDAY	7PM
OCTOBER	10/10/2022	MONDAY	7PM
NOVEMBER	14/11/2022	MONDAY	7PM
DECEMBER	12/12/2022	MONDAY	7PM
JANUARY	10/01/2023	TUESDAY	7PM
FEBRUARY	13/02/2023	MONDAY	7PM
MARCH	14/03/2023	TUESDAY	7PM
APRIL	10/04/2023	MONDAY	7PM
MAY	08/05/2023	MONDAY	7PM

NOTE A: ROLE OF PARISH COUNCIL REPRESENTATIVES.

1. The Parish Council may appoint a Councillors or Councillors to as act as Parish Council Representative for specific matters. Such appointments may be made at any time during the Council year but cease at the May meeting of the Parish Council.
2. The Parish Council Representative's role includes:
 - a. to gather and keep abreast of information on their specialist area through research, discussion with WCC or other bodies or attendance at outside events or committees previously agreed by the Parish Council.
 - b. to listen to concerns of Parishioners, assess their importance and whether there is commonality of view amongst Parishioners, and to report such concerns to the Parish Council.
 - c. to keep any fellow Representative informed of developments or communications.
 - d. to update the Clerk periodically so as to avoid duplication with other areas of Parish Council work.
 - e. to recommend to the Parish Council policies or actions which may be beneficial to Parishioners, for debate and decision by the Parish Council.
 - f. when specifically mandated by the Parish Council, to represent the Parish Council's decisions to outside bodies;
3. The Parish Council Representative is not empowered to make any decisions on behalf of the Parish Council but can only make recommendation for the Parish Council to debate and determine.
4. All formal communications with the press and outside bodies should, as always, be conducted through the Parish Clerk, unless the Parish Council specifically determines otherwise.
5. In order to ensure the role of the Parish Council Representative is effective, Councillors should refer any significant matter brought to their attention on a subject not within their Parish Council Representative role, to the appropriate Parish Council Representative. Similarly, unless determined otherwise by the Parish Council, Councillors should not become directly involved in any significant matter for which another Parish Councillor has been appointed Representative.

Originally adopted by the Parish Council June 2013 and re-confirmed annually.

Winchester City Councillor Report

May 2022

1. Homes for Ukraine update

Hampshire County Council continues to work with Winchester City Council and key local partners to enable the provision of immediate support and assistance to Ukrainians arriving in Hampshire under the Government's Homes for Ukraine scheme. The focus remains on conducting necessary safeguarding and wellbeing checks via home visits, distribution of financial support, in collaboration with public sector partners, and ensuring key information is shared with guests and sponsors efficiently.

The latest available figures for visas issued are that as of 3 May 2022, 45,126 visas have been issued for England, of which 1,685 are for Hampshire.

In addition to the other support available, an initial fund of £100,000 has been made available by the County Council for local community and voluntary organisations working to help Ukrainian families to apply for financial support through the Leader's Community Grants - details at <https://www.hants.gov.uk/community/grants/grants-list/leaders-community-grants>

Applications will be considered from Parish and Town Councils and local branches of national charities (where the support being provided is delivered specifically in Hampshire) and may be for any amount up to £5,000. Applications will be assessed to ensure that the proposals are appropriate, that necessary levels of safeguarding are in place and that the activity does not unnecessarily duplicate support which is already provided through other channels.

Further details are available by following the link above or by contacting ccbsgrants@hants.gov.uk.

Useful information for anyone welcoming Ukrainian guests can be found at <https://www.gov.uk/guidance/homes-for-ukraine-scheme-frequently-asked-questions>.

Hampshire County Council has a a useful webpage at www.hants.gov.uk/ukraine which is being regularly updated This includes a new Welcome Guide webpage <https://www.hants.gov.uk/ukraine/guests/welcome-guide>

2. Elections

The local elections took place on 5th May. Due to the purdah rules, no major decisions were permitted to be made by Winchester City Council during the election campaign, so this report is by necessity rather short.

Following the elections, the Liberal Democrats remain in control of the council, with the make up of the council comprising 27 Liberal Democrats, 15 Conservatives, 2 independents and one Green Party councillor.

Locally, Neil Bolton was elected to replace Laurence Ruffell who has retired from the council.

Hugh Lumby Neil Bolton

THIS AGREEMENT is made the 6 day of April 2022

Between

Colden Common Parish Council hereinafter called the “Lead Parish” of the one part

and

Owslebury & Morestead Parish Council (hereinafter called the “Associate”) of the other part

WHEREAS

- 1) The Lead Parish, under an agreement made with Hampshire County Council has agreed to undertake the duties of lead parish in a Parish Lengthsman scheme (referred to here as “The Scheme”).
- 2) The Scheme will include The Lead Parish and up to [insert number of associate parishes] other parish councils (the “Associates”) and will operate for one year from 1st April 2022 to 31st March 2023 under this agreement (“Agreement”).
- 3) Hampshire County Council will provide funding to the Lead Parish, which will arrange for the works and services to be provided for the Scheme by a contractor (“Parish Lengthsman”).
- 4) The Lead Parish Council has agreed to fulfil certain obligations to Hampshire County Council and to procure that the Associates shall fulfil those same obligations, insofar as it concerns the activities of the Scheme within the Associate’s parish.

NOW IT IS HEREBY AGREED

1. Operational Matters

- 1.1. The Lead Parish and the Associate will agree a schedule of dates when the Parish Lengthsman will work at the parish of the Associate. The time of the Parish Lengthsman will be allocated to the Associate in proportion to the number of Parishes in the Cluster.
- 1.2. In the event that the Associate requires a level of service above that which is funded under the Scheme, the Associate shall meet any such cost.
- 1.3. The Lead Parish will make the following funding available for the Scheme:
One thousand pounds (£1,000) per annum per Associate.
- 1.4. While the duties of the Parish Lengthsman will be performed under contract with the Lead Parish, the Associate will be responsible for the allocation of

tasks, supervision of work, confirmation of hours worked and approval of any expenses incurred in carrying out of duties while at the parish of the Associate.

- 1.5. The Associate undertakes to remit any records of work carried out under this Agreement in a timely fashion.
- 1.6. The Associate undertakes that it will ensure that the Parish Lengthsman carries out those duties in accordance with the practices and procedures prescribed by the Lead Parish.
- 1.7. The Associate will allocate tasks that are included in Schedule 1 to this Agreement only and will not allocate tasks set out in Schedule 2 to this Agreement.
- 1.8. In providing the services and works under this Agreement the Associate shall conform to policies, specifications, procedures, standards and directions provided by the Lead Parish on behalf of Hampshire County Council
- 1.9. Where common forms or documents have been agreed by the parties the Associate shall use such forms and documents.
- 1.10. Under the Health and Safety at Work Act 1974, The Lead Parish and the Associate have a duty to ensure the Health, Safety and wellbeing of the Parish Lengthsman. This will include training in basic highway safety and the provision of safe working practices and procedures.
- 1.11 The Lead Parish may instruct the Associate to undertake Further Works as defined in Schedule 1). The costs for any Further Works shall be assessed and agreed between the Parties in writing.
- 1.12 The Associate will keep records of spend and works undertaken and will be remitted to the Lead Parish on a regular basis but at least every 3 months.

2. Insurance and Claims

- 2.1. The Associate shall take out and maintain Public Liability insurance, which shall, for any one occurrence or series of occurrences arising out of one event, be not less than £10,000,000 from a reputable insurer
- 2.2. The Lead Parish and the Associate acknowledges that claims and proceedings against the highway authority in respect of the provision of the Scheme by the Associate under this Agreement (other than claims under contracts undertaken by the Associate) shall be handled by Hampshire County Council.
- 2.3. Any such claims or other intimation of such proceedings received by the Associate shall be referred by the Associate to the Lead Parish and

Hampshire County Council as soon as possible but in any event within 7 days of receipt of the claim together with all supporting information.

- 2.4. The Associate shall provide to Lead Parish and Hampshire County Council any witnesses, information, evidence, documents or other material necessary to enable Hampshire County Council to conduct or settle any subsequent proceedings.
- 2.5 This Agreement shall be governed by English Law and the parties submit to the exclusive jurisdiction of the English Courts.

IN WITNESS whereof the Lead Parish and Associate have executed this Agreement and delivered the same on the day and year first before written

Signed on behalf of
Colden Common Parish Council (Lead Parish)



Date 6th April 2022

Owslebury & Morestead Parish Council (Associate Parish)

_____ Date _____

SCHEDULE ONE

DUTIES OF PARISH LENGTHSMAN

This schedule lists the duties the Parish Lengthsman may undertake.

1 Drainage

- Clearing existing drainage grips
- Maintaining ditches
- Cleaning channels
- Clearing outfalls
- Rodding pipes (off highway)
- Flood prevention works (as specifically directed by the Parish Council as “Further Works”)

2 Signage

- Cleaning (non illuminated)
- Minor repairs

3 Other Minor Works

- Remove soil/detritus
- Cutting back vegetation overhanging the road or footway
- Clearing footways of weeds/moss
- Removing vegetation from parapets or fences
- Grass strimming
- Reporting defects
- Sweeping
- Litter picking
- Removing flyposting
- Unauthorised sign and graffiti removal
- Cleaning street name plates
- Cleaning bus shelters
- Minor repairs to street furniture
- ‘Village upkeep’

SCHEDULE TWO

EXCLUDED WORKS

This schedule lists the duties the Parish Lengthsman may not undertake.

1 Cleaning, repair or any work on:

- Street Lighting
- Illuminated signs and bollards (i.e. any street furniture with an electrical connection)
- The live road, unless the approved traffic management course has been passed
- and, Patching and structural repairs (no excavation due to possibility of underground apparatus)
- Emergency call-outs to highway incidents

MEETING REPORT: Correspondence from a Resident on the Noise from the Motocross

DATE: 17 May 2022

WRITTEN BY: The Clerk

AGENDA ITEM: 14

Dear Chairman and Council Members

I am sure that I will not be the only resident complaining about the noise from last Sunday's grasstrack racing at Whaddon Farm. The combination of very loud bikes, a tannoy set to maximum volume and the event going on past 6pm was another day when one didn't want to be in the garden.

We now have Good Friday motocross and then another motocross on 8 May so three weekends out of five impacted.

I would be interested to hear the Council's position on this and understand what discussions are held with the landowner to minimise the impact on residents' discomfort.

Yours faithfully



the **play** inspection company

Annual Inspection

Winchester City Council

Hilly Close PA (Owslebury PC)

Hilly Close, Owslebury, Winchester,



API Associate



Unit 5, Glenmore Business Park, Blackhill Road, Poole, Dorset, BH16 6NL
t- 01202 590675 e- info@playinspections.co.uk

[www. playinspections .co.uk](http://www.playinspections.co.uk)

Inspection Scope for RPII Inspection Methodology

This document outlines the RPII scope for inspections undertaken by the Inspectors listed as Annual Inspectors on the RPII Register of Inspectors when undertaking Indoor Annual, Outdoor Annual, Outdoor Operational and Outdoor Routine inspections.

Inspections are undertaken with reference to the standards listed in this preamble only; where no date for the standard is given it will be the standard that is current at the time of inspection except where overlap periods are granted by the standards committee when standards are updated. The information contained in reports is provided to assist the owner/operator in fulfilling their responsibilities as detailed in the relevant standard. Other standards referenced within the listed standards do not form part of the inspection, unless they are also explicitly listed here.

The following standards are relevant to all installations of equipment that are publicly accessible to users; this includes public parks, pay and play parks, schools, nurseries, public houses, holiday parks, indoor play centres, farm parks etc. All equipment used or employed in publicly accessible areas should meet with the requirements of the relevant standards (listed below):

BS EN 1176 Parts 1, 2, 3, 4, 5, 6, 10 & 11 Playground equipment intended for permanent installation outdoors & indoors.

BS EN 1176 Part 7 - 'Guidance on Installation, Inspection, Maintenance and Operation' (this document gives guidance to the owners/operators of the facility on the installation, inspection, maintenance and operation of playground equipment, excluding ancillary items).

In the United Kingdom the National Foreword forms an important part to the understanding and implementation of the recommendations set out in this document. It clarifies the application of the document within the UK as best practice guidance, as the document has been used since its initial publication. Therefore, in the UK this standard (BS EN 1176 – Part 7) contains no requirements and needs to be read and implemented as guidance, with the use of the term 'shall' therefore becoming a recommendation, as in the term 'should'.

Domestic play equipment falls outside of the scope of BS EN 1176 and has its own standards (BS EN 71 series – Safety of Toys). Where domestic equipment can be identified this will be acknowledged in the report but any comments concerning compliance will follow the requirements and recommendations of BS EN 1176.

When water play items, including spray parks, are inspected any comments concerning compliance within the inspection will refer to BS EN 1176. We have not assessed these against the requirements of BS EN 17232 (Water play equipment and features).

Other equipment that is not clearly identified as unsupervised or domestic (natural play, self-build equipment etc.) will be assessed for compliance with the relevant standard listed below:

BS EN 15312 Free access multi-sports equipment
BS EN 14974 Skateparks
BS EN 16630 Permanently installed outdoor fitness equipment
BS EN 16899 Parkour equipment (plus RPII/API guidance notes)

Annual and Post Installation inspections will take into consideration compliance with these current standards, and defects related to wear and vandalism. Items not listed in the report have not been included in the inspection. The inspection will cover the playground equipment and the active area (that area which is obviously part of the playground), nominally up to three metres around, the fence line if closer, or other areas as agreed.

Operational inspections only take into consideration defects related to cleanliness, equipment ground clearances, ground surface finishes, exposed foundations, sharp edges, missing parts, excessive wear (of moving parts) structural integrity, wear and vandalism.

Routine visual inspections relate only to the most obvious defects such as broken or missing parts, litter, vandalism and issues created by severe weather conditions (the intention is to identify hazards created by storm damage).

All inspections are non-dismantling, non-destructive and do not include any structural, toxicology or impact assessments defined in the standard; however, the inspector will undertake a manual test for stability and if equipment fails under manual load, or any other hazard is identified as an unacceptable risk, the owner/operator will be notified as soon as practicably possible.

The inspector will access all reasonably accessible equipment and will assess all reasonably accessible parts above the standing surface. Where it is not possible to access parts of the equipment without employing an alternative means of access the report will record the action required by the owner/operator to ensure the continued safe use of the equipment.

Ancillary equipment will be assessed using the inspector's knowledge and experience of the standards named in this document. (Note: Ancillary items are not included in the specific equipment-type parts of the EN 1176 series; hence they are not assessed for compliance with EN 1176 series and are subject to a general safety assessment).

The owner/operator is responsible for the overall safety of the equipment and area.

The inspector will not undertake any of the following works unless specifically agreed in writing at the time of order:

Checking the depth and underlying structural integrity of any surface areas and/or carrying out any testing of the impact attenuating properties of any surfaces; the identification of any corrosion, rot or other deterioration in any apparatus or equipment other than by an external inspection; the inspection of any equipment (or part thereof) that is beneath the playing surface (loose-fill materials may be moved to expose foundations); tightening any bolts, hinges or other fixing devices on any apparatus or equipment; assessing or inspecting any electrical installations contained on any site and/or apparatus and/or equipment; assessing or inspecting any water supplies and/or water features and/or any associated computerised systems (including carrying out any programming); where planting or trees are mentioned in the report no assessments of toxicity, suitability or condition are undertaken – the owner/operator should have suitable inspections provided by a competent person.

The owner/operator should have a 'design risk assessment' provided by the manufacturer/designer of the area for the equipment and location in which the facility is installed.

The operator is responsible for managing risks of their provision and is required by law to carry out a 'suitable and sufficient assessment' of the risks associated with a site or activity. This inspection shall be considered as contributing to the operator's discharge of this responsibility.

The details contained within the report are a snapshot of the condition at the time of inspection only and subsequent events may affect the condition of the facility. Suggested remedial actions are based on the knowledge and experience of the inspector and/or that of the inspection company. The owner/operator should always seek the advice of the manufacturer or a competent person when undertaking repairs and/or modifications to equipment.

A full copy of the Play Inspection Company Ltd. Terms & Conditions is available on our website (www.playinspections.co.uk)

The operator is responsible for following the guidance of the relevant standards. The standards give guidance on the installation, inspection, maintenance and operation of the various types of facilities. The inspection guidance is listed in Table 1, with an indication of which parts will be included in an RPII Annual or Post-Installation Inspection. The relevant standards also contain additional parts which the operator should follow.

Inspection recommendations of relevant standards Refer to relevant standards for full text	Annual Main	RPII Annual/ Post Installation Inspection
6.1 d) Overall levels of safety of equipment (see note 1)	✓	✓ [1]
6.1 d) Overall levels of safety of foundations (see note 1)	✓	✓ [1]
6.1 d) Overall levels of safety of playing surfaces (see note 2)	✓	✓ [2]
6.1 d) Compliance with the relevant parts of the standard and or risk assessment (see note 3)	✓	✓ [3]
6.1 d) Effects of weather	✓	✓
6.1 d) Presence of rot, decay or corrosion (see note 1)	✓	✓ [1]
6.1 d) Assessment of repairs made or added or replaced components (see note 4)	✓	✓ [4]
6.1 d) Excavation or dismantling/additional measures	✓	✗
6.2.1 Assessment of glass reinforced plastics (see note 5)	✓	✓ [5]
6.2.1 Inspection of one post equipment (see note 1)	✓	✓ [1]
6.2.4 Undertaking the Operators inspection protocol	✓	✗

NB: The clause numbers in table 1 are taken from BS EN 1176 - Part 7:2020. The content is equally applicable to all other relevant standards listed herein. Playgrounds contain a range of equipment from different manufacturers and installed over a number of years; operators should implement any guidance provided by the manufacturer. Item specific detail is not readily available to RPII Playground Inspectors, whose report contributes to the operator's overall Annual Main Inspection as detailed in the relevant standards.

[1] A manual test only is undertaken for stability. Wear and instability are only detectable where readily apparent without dismantling or destruction and without the use of tools, excavation or specialist equipment. Rot and corrosion are tested or with a hammer and/or steel rod. Decay in timber may exist which can only be found with specialist equipment.

[2] Only the visible condition and dimensional compliance of surface extent is considered. Neither testing of impact attenuating properties nor measurement of the thickness of bound surfaces are undertaken on RPII annual inspections.

[3] The inspection assesses compliance where this can be tested on site using manual methods without dismantling, destruction and without the use of tools or specialist equipment.

[4] The operator should use manufacturer's recommended parts, or equivalent. We are unable to verify if such parts have been used, and any subsequent change in quality or performance.

[5] Visible glass fibres will be noted in reports. The operator is responsible for repairs or replacement.

Risk Assessment Matrix

			Scores in the report are multiplication factors of Likelihood x Severity					
			Severity>>					
Likelihood	Very High probability, if the situation is not addressed an accident is almost certain.	5	Very High	VL (5)	L (10)	M (15)	H (20)	VH (25)
	High probability an accident is probable without any added factor.	4	High	VL (4)	L (8)	M (12)	H (16)	H (20)
	Moderate probability an incident is foreseeable.	3	Moderate	VL (3)	L (6)	L (9)	M (12)	M (15)
	Some probability, requires a combination of factors to take place.	2	Low	VL (2)	VL (4)	L (6)	L (8)	L (10)
	No significant probability; lightning strike, freak accident.	1	Very Low	VL (1)	VL (2)	VL (3)	VL (4)	VL (5)
			Very Low	Low	Moderate	High	Very High	
			1	2	3	4	5	
			No injury likely e.g. damaged or soiled clothing, minor bruising, grazes	Minor injury, laceration or bruising requiring first aid only	Injury requiring medical intervention e.g. cuts requiring stitches	Serious injury including concussions or fracture of long bones	Severe injury involving a potential life changing injury or fatality	
			Severity>>					
<p>Note 1: The total risk scores included within our reports are a multiplication factor of the calculated Likelihood and Severity of each finding. Both Likelihood and Severity are given a number between 1 - 5 as shown on the matrix above and these two numbers are then multiplied together to give the total risk score that is shown against defects on the report. Total risk scores can be divided in both directions, i.e. a total risk score of 12 could be a Likelihood (3) x Severity (4) or Likelihood (4) x Severity (3).</p> <p>Note 2: When we inspect we only see a snapshot of the current condition of the equipment. It is the operators responsibility to ensure that there is a continuing level of maintenance to keep the equipment in good working order and the site fit for use.</p>								

Equipment has been assessed to the following standards where relevant:

- BS EN 1176 Parts 1-11 (Playground equipment and surfacing)
- BS EN 14974 (Facilities for users of roller sports equipment)
- BS EN 15312 (Free access multi-sports equipment)
- BS EN 16899 (Parkour Equipment)
- BS EN 16630 (Outdoor Fitness Equipment).



Hilly Close PA (Owslebury PC)

Inspection Ref: 1599876

Site Ref: 33703

Inspected: 10-March-2022 - 12:59 by Leon Pope RPII Annual Inspector

Risk Assessment: 8 Low Risk



Location:

The site is partially overlooked by properties in the local community

Disabled Access:

Generally accessible; an area accessible to most.

i 5 - Very Low Risk

Item: Sign
Manufacturer: Owner/Operator
Surface Type: Grass
Item Quantity: 1
Equipment Compliance: N/A
Surface Area Compliance: N/A

Total Findings: 1



Finding 1

BS EN 1176 Part 7 recommends that signage shall include emergency contact details and contact details of owner / operator for reporting maintenance issues - Provide additional information

i 4 - Very Low Risk

Item: Gate - Self Closing
Manufacturer: I.A.E. Fencing
Surface Type: Paving Slabs
Item Quantity: 1
Equipment Compliance: N/A
Surface Area Compliance: N/A

Total Findings: 1



Finding 1

This item is satisfactory - no work required -



i 6 - Low Risk

Item: Gate - Maintenance
Manufacturer: Not Identified
Surface Type: Grass
Item Quantity: 1
Equipment Compliance: N/A
Surface Area Compliance: N/A



Total Findings: 1

Finding 1

Parts of the timber are rough or splintered - Remove all rough or sharp edges

i 6 - Low Risk

Item: Fence - Chainlink
Manufacturer: Not Identified
Surface Type: Grass
Item Quantity: 1
Equipment Compliance: N/A
Surface Area Compliance: N/A



Total Findings: 2

Finding 1

There is surface corrosion present on the item - Consider treating the item

Finding 2

The adjacent foliage is overhanging - Cut back and maintain



i 4 - Very Low Risk

Item: Bench
Manufacturer: Not Identified
Surface Type: Grass
Item Quantity: 1
Equipment Compliance: N/A
Surface Area Compliance: N/A



Total Findings: 1

Finding 1

This item is satisfactory - no work required -

i 3 - Very Low Risk

Item: Litter Bin
Manufacturer: Owner/Operator
Surface Type: Grass
Item Quantity: 1
Equipment Compliance: N/A
Surface Area Compliance: N/A



Total Findings: 1

Finding 1

This item is satisfactory - no work required -

i 6 - Low Risk

Item: Swing Barrier
Manufacturer: Playdale Playgrounds Ltd
Surface Type: Grass
Item Quantity: 1
Equipment Compliance: N/A
Surface Area Compliance: N/A



Total Findings: 3

Finding 1

There is some strimmer / machinery damage apparent on the posts, this can penetrate the preservative applied to the timber and accelerate the rotting process - Monitor for any deterioration (rot) and replace as required

Finding 2

There is some evidence of rot in the timber - Monitor for any further deterioration and replace as required

Finding 3

Parts of the timber are rough or splintered - Remove all rough or sharp edges

i 8 - Low Risk

Item: Basket Swing - Type 1
Manufacturer: Playdale Playgrounds Ltd
Surface Type: Grass Matrix Tiles
Item Quantity: 1
Equipment Compliance: Yes
Surface Area Compliance: Yes



Total Findings: 4

Finding 1

The grass mats are silted up and the soil is compacted; this may have an effect on the impact absorbing properties of the surface - Consider HIC testing impact absorbing properties to ensure the correct surface qualities are maintained for the equipment and replace as required

Finding 2

Fixing Pins have been installed in the impact areas of the grass mats - Remove pins from impact areas

Finding 3

There is some notable evidence of chain wear - Monitor for any further deterioration and replace when 40% worn

Finding 4

A number of crossbar fixing(s) have worked loose - Secure all loose fixings

i 6 - Low Risk

Item: 2 Bay (2 Flat, 2 Cradle)
Manufacturer: Wicksteed Playgrounds
Surface Type: Wet Pour
Item Quantity: 1
Equipment Compliance: Yes
Surface Area Compliance: Yes



Total Findings: 4

Finding 1

The anti-roosting spikes have slipped out of position - Resecure

Finding 2

The paintwork on this item has been damaged or worn exposing the metal underneath which is rusting - Treat any rusting components and repaint

Finding 3

The bushes are showing signs of wear - Monitor for any further deterioration and replace as required

Finding 4

There is some notable evidence of chain wear - Monitor for any further deterioration and replace when 40% worn

i 6 - Low Risk

Item: Multi Play (Toddler)
Manufacturer: Playdale Playgrounds Ltd
Surface Type: Grass Matrix Tiles
Item Quantity: 1
Equipment Compliance: Yes
Surface Area Compliance: Yes



Total Findings: 4

Finding 1

There is some strimmer / machinery damage apparent on the posts, this can penetrate the preservative applied to the timber and accelerate the rotting process - Monitor for any deterioration (rot) and replace as required

Finding 2

There is some evidence of rot in the posts - Monitor for any further deterioration and replace as required

Finding 3

There is a missing net mount cap - Replace

Finding 4

A number of eyebolt fixing(s) have worked loose - Secure all loose fixings

i 6 - Low Risk

Item: Spring See-Saw
Manufacturer: Kompan Ltd
Surface Type: Grass Matrix Tiles
Item Quantity: 1
Equipment Compliance: Yes
Surface Area Compliance: Yes



Total Findings: 1

Finding 1

The Handgrips/Footrests rotate and may cause an unexpected movement for the user - Secure Handgrips/Footrests to prevent rotation.

i 8 - Low Risk

Item: Roundabout
Manufacturer: Wicksteed Playgrounds
Surface Type: Wet Pour
Item Quantity: 1
Equipment Compliance: Yes
Surface Area Compliance: Yes



Total Findings: 5

Finding 1

There is moderate damage to the surface - Repair the damaged areas of surfacing

Finding 2

There is or are fixings missing on the item - Replace all missing fixings

Finding 3

The seat has minor damage or wear - Monitor for any further deterioration and replace as required

Finding 4

The bearing is showing signs of wear - Monitor for any further deterioration and replace as required

Finding 5

There is weed / vegetation growth on, between, or around the edges of the surfacing - Remove weed / vegetation growth

i 4 - Very Low Risk

Item: Multi Play (Junior)
Manufacturer: Husson UK
Surface Type: Grass Matrix Tiles
Item Quantity: 1
Equipment Compliance: Yes
Surface Area Compliance: Yes

Total Findings: 1



Finding 1

This item is satisfactory - no work required -

i 6 - Low Risk

Item: Multi Play (Junior)
Manufacturer: Proludic
Surface Type: Grass Matrix Tiles
Item Quantity: 1
Equipment Compliance: Yes
Surface Area Compliance: Yes

Total Findings: 5



Finding 1

There is/are several inserts missing - Replace missing inserts

Finding 3

The spinning platform bearing is showing signs of wear - Monitor for any further deterioration and replace as required

Finding 5

There is some notable evidence of chain wear - Monitor for any further deterioration and replace when 40% worn

Finding 2

The bearing on the spinning platform is dry - Service and lubricate the bearing(s)

Finding 4

There is some strimmer / machinery damage apparent on the posts, this can penetrate the preservative applied to the timber and accelerate the rotting process - Monitor for any deterioration (rot) and replace as required



i 8 - Low Risk

Item: Basketball Post
Manufacturer: Sure Shot
Surface Type: Bitmac
Item Quantity: 1
Equipment Compliance: Yes
Surface Area Compliance: N/A

Total Findings: 3



Finding 1

The paintwork on this item has been damaged or worn exposing the metal underneath which is rusting - Treat any rusting components and repaint

Finding 3

There are projecting bolt thread(s) present - Remove excess thread length and deburr or provide cap

Finding 2

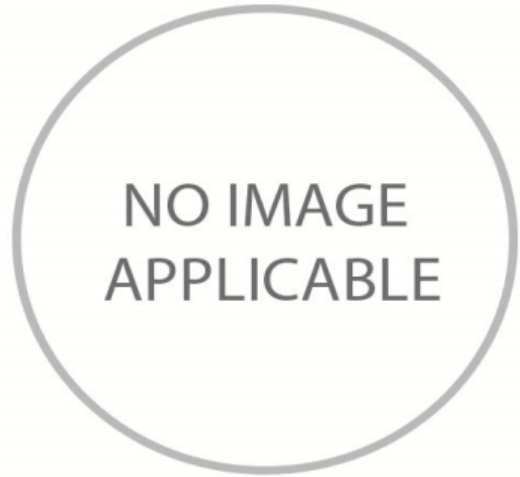
The net is loose - Secure

Findings information

5 - Very Low Risk (Finding 1)

Item: Ancillary Items - Sign
Manufacturer: Owner/Operator

Risk Level: V - Very Low Risk
Surface: Grass



Finding: BS EN 1176 Part 7 recommends that signage shall include emergency contact details and contact details of owner / operator for reporting maintenance issues
Action: Provide additional information

i 6 - Low Risk (Finding 1)

Item: Gates - Gate - Maintenance
Manufacturer: Not Identified

Risk Level: L - Low Risk
Surface: Grass



Finding: Parts of the timber are rough or splintered

Action: Remove all rough or sharp edges

i 6 - Low Risk (Finding 1)

Item: Fences - Fence - Chainlink
Manufacturer: Not Identified

Risk Level: L - Low Risk
Surface: Grass



Finding: There is surface corrosion present on the item

Action: Consider treating the item

i 6 - Low Risk (Finding 2)

Item: Fences - Fence - Chainlink
Manufacturer: Not Identified

Risk Level: L - Low Risk
Surface: Grass



Finding: The adjacent foliage is overhanging

Action: Cut back and maintain

i 6 - Low Risk (Finding 1)

Item: Swings - Swing Barrier
Manufacturer: Playdale Playgrounds Ltd

Risk Level: L - Low Risk
Surface: Grass



Finding: There is some strimmer / machinery damage apparent on the posts, this can penetrate the preservative applied to the timber and accelerate the rotting process

Action: Monitor for any deterioration (rot) and replace as required

i 6 - Low Risk (Finding 2)

Item: Swings - Swing Barrier
Manufacturer: Playdale Playgrounds Ltd

Risk Level: L - Low Risk
Surface: Grass



Finding: There is some evidence of rot in the timber

Action: Monitor for any further deterioration and replace as required

i 6 - Low Risk (Finding 3)

Item: Swings - Swing Barrier
Manufacturer: Playdale Playgrounds Ltd

Risk Level: L - Low Risk
Surface: Grass



Finding: Parts of the timber are rough or splintered

Action: Remove all rough or sharp edges

i 8 - Low Risk (Finding 1)

Item: Swings - Basket Swing - Type 1
Manufacturer: Playdale Playgrounds Ltd

Risk Level: L - Low Risk
Surface: Grass Matrix Tiles



Finding: The grass mats are silted up and the soil is compacted; this may have an effect on the impact absorbing properties of the surface

Action: Consider HIC testing impact absorbing properties to ensure the correct surface qualities are maintained for the equipment and replace as required

i 5 - Very Low Risk (Finding 2)

Item: Swings - Basket Swing - Type 1
Manufacturer: Playdale Playgrounds Ltd

Risk Level: V - Very Low Risk
Surface: Grass Matrix Tiles



Finding: Fixing Pins have been installed in the impact areas of the grass mats

Action: Remove pins from impact areas

i 6 - Low Risk (Finding 3)

Item: Swings - Basket Swing - Type 1
Manufacturer: Playdale Playgrounds Ltd

Risk Level: L - Low Risk
Surface: Grass Matrix Tiles



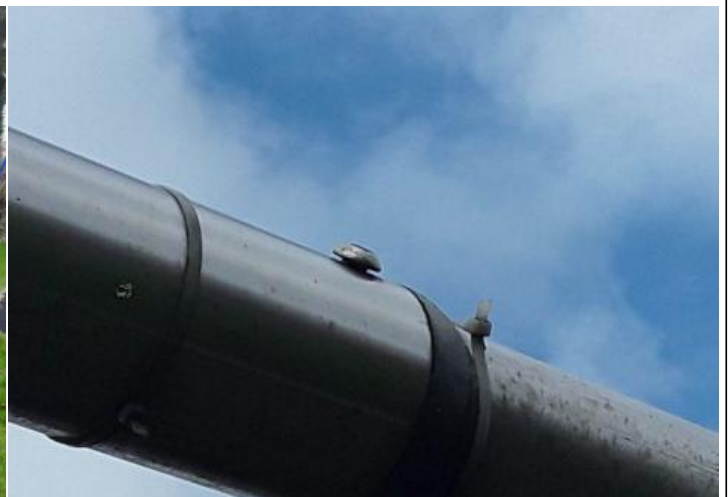
Finding: There is some notable evidence of chain wear

Action: Monitor for any further deterioration and replace when 40% worn

i 8 - Low Risk (Finding 4)

Item: Swings - Basket Swing - Type 1
Manufacturer: Playdale Playgrounds Ltd

Risk Level: L - Low Risk
Surface: Grass Matrix Tiles



Finding: A number of crossbar fixing(s) have worked loose

Action: Secure all loose fixings

i 6 - Low Risk (Finding 1)

Item: Swings - 2 Bay (2 Flat, 2 Cradle)
Manufacturer: Wicksteed Playgrounds

Risk Level: L - Low Risk
Surface: Wet Pour



Finding: The anti-roosting spikes have slipped out of position

Action: Resecure

i 6 - Low Risk (Finding 2)

Item: Swings - 2 Bay (2 Flat, 2 Cradle)
Manufacturer: Wicksteed Playgrounds

Risk Level: L - Low Risk
Surface: Wet Pour



Finding: The paintwork on this item has been damaged or worn exposing the metal underneath which is rusting

Action: Treat any rusting components and repaint

i 4 - Very Low Risk (Finding 3)

Item: Swings - 2 Bay (2 Flat, 2 Cradle)
Manufacturer: Wicksteed Playgrounds

Risk Level: V - Very Low Risk
Surface: Wet Pour



Finding: The bushes are showing signs of wear

Action: Monitor for any further deterioration and replace as required

i 6 - Low Risk (Finding 4)

Item: Swings - 2 Bay (2 Flat, 2 Cradle)
Manufacturer: Wicksteed Playgrounds

Risk Level: L - Low Risk
Surface: Wet Pour



Finding: There is some notable evidence of chain wear

Action: Monitor for any further deterioration and replace when 40% worn

i 6 - Low Risk (Finding 1)

Item: Activity Equipment - Multi Play (Toddler)
Manufacturer: Playdale Playgrounds Ltd

Risk Level: L - Low Risk
Surface: Grass Matrix Tiles



Finding: There is some strimmer / machinery damage apparent on the posts, this can penetrate the preservative applied to the timber and accelerate the rotting process

Action: Monitor for any deterioration (rot) and replace as required

i 6 - Low Risk (Finding 2)

Item: Activity Equipment - Multi Play (Toddler)
Manufacturer: Playdale Playgrounds Ltd

Risk Level: L - Low Risk
Surface: Grass Matrix Tiles



Finding: There is some evidence of rot in the posts

Action: Monitor for any further deterioration and replace as required

i 6 - Low Risk (Finding 3)

Item: Activity Equipment - Multi Play (Toddler)
Manufacturer: Playdale Playgrounds Ltd

Risk Level: L - Low Risk
Surface: Grass Matrix Tiles



Finding: There is a missing net mount cap

Action: Replace

i 6 - Low Risk (Finding 4)

Item: Activity Equipment - Multi Play (Toddler)
Manufacturer: Playdale Playgrounds Ltd

Risk Level: L - Low Risk
Surface: Grass Matrix Tiles



Finding: A number of eyebolt fixing(s) have worked loose

Action: Secure all loose fixings

i 6 - Low Risk (Finding 1)

Item: Rocking Equipment - Spring See-Saw
Manufacturer: Kompan Ltd

Risk Level: L - Low Risk
Surface: Grass Matrix Tiles



Finding: The Handgrips/Footrests rotate and may cause an unexpected movement for the user
Action: Secure Handgrips/Footrests to prevent rotation.

i 8 - Low Risk (Finding 1)

Item: Rotor Play - Roundabout
Manufacturer: Wicksteed Playgrounds

Risk Level: L - Low Risk
Surface: Wet Pour



Finding: There is moderate damage to the surface
Action: Repair the damaged areas of surfacing

i 8 - Low Risk (Finding 2)

Item: Rotor Play - Roundabout
Manufacturer: Wicksteed Playgrounds

Risk Level: L - Low Risk
Surface: Wet Pour



Finding: There is or are fixings missing on the item

Action: Replace all missing fixings

i 6 - Low Risk (Finding 3)

Item: Rotor Play - Roundabout
Manufacturer: Wicksteed Playgrounds

Risk Level: L - Low Risk
Surface: Wet Pour



Finding: The seat has minor damage or wear

Action: Monitor for any further deterioration and replace as required

i 6 - Low Risk (Finding 4)

Item: Rotor Play - Roundabout
Manufacturer: Wicksteed Playgrounds

Risk Level: L - Low Risk
Surface: Wet Pour



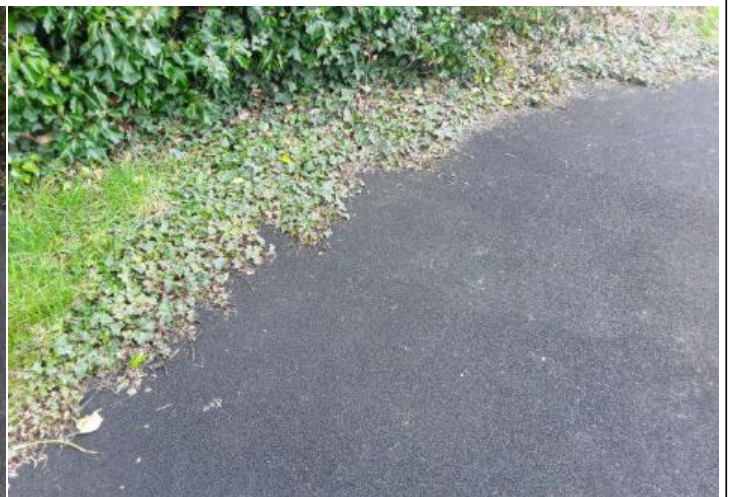
Finding: The bearing is showing signs of wear

Action: Monitor for any further deterioration and replace as required

i 6 - Low Risk (Finding 5)

Item: Rotor Play - Roundabout
Manufacturer: Wicksteed Playgrounds

Risk Level: L - Low Risk
Surface: Wet Pour



Finding: There is weed / vegetation growth on, between, or around the edges of the surfacing

Action: Remove weed / vegetation growth

i 4 - Very Low Risk (Finding 1)

Item: Activity Equipment - Multi Play (Junior)
Manufacturer: Proludic

Risk Level: V - Very Low Risk
Surface: Grass Matrix Tiles



Finding: There is/are several inserts missing

Action: Replace missing inserts

i 6 - Low Risk (Finding 2)

Item: Activity Equipment - Multi Play (Junior)
Manufacturer: Proludic

Risk Level: L - Low Risk
Surface: Grass Matrix Tiles



Finding: The bearing on the spinning platform is dry

Action: Service and lubricate the bearing(s)

i 6 - Low Risk (Finding 3)

Item: Activity Equipment - Multi Play (Junior)
Manufacturer: Proludic

Risk Level: L - Low Risk
Surface: Grass Matrix Tiles



Finding: The spinning platform bearing is showing signs of wear

Action: Monitor for any further deterioration and replace as required

i 6 - Low Risk (Finding 4)

Item: Activity Equipment - Multi Play (Junior)
Manufacturer: Proludic

Risk Level: L - Low Risk
Surface: Grass Matrix Tiles



Finding: There is some strimmer / machinery damage apparent on the posts, this can penetrate the preservative applied to the timber and accelerate the rotting process

Action: Monitor for any deterioration (rot) and replace as required

i 6 - Low Risk (Finding 5)

Item: Activity Equipment - Multi Play (Junior)
Manufacturer: Proludic

Risk Level: L - Low Risk
Surface: Grass Matrix Tiles



Finding: There is some notable evidence of chain wear

Action: Monitor for any further deterioration and replace when 40% worn

i 6 - Low Risk (Finding 1)

Item: Multi Use Games Area - Basketball Post
Manufacturer: Sure Shot

Risk Level: L - Low Risk
Surface: Bitmac



Finding: The paintwork on this item has been damaged or worn exposing the metal underneath which is rusting

Action: Treat any rusting components and repaint

i 6 - Low Risk (Finding 2)

Item: Multi Use Games Area - Basketball Post
Manufacturer: Sure Shot

Risk Level: L - Low Risk
Surface: Bitmac



Finding: The net is loose

Action: Secure

i 8 - Low Risk (Finding 3)

Item: Multi Use Games Area - Basketball Post
Manufacturer: Sure Shot

Risk Level: L - Low Risk
Surface: Bitmac



Finding: There are projecting bolt thread(s) present

Action: Remove excess thread length and deburr or provide cap